

# PRODUCE PLUS

# Market Outlook

SEPTEMBER 16, 2020



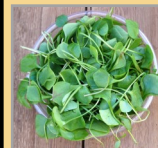
## DELTA PEARS



Stillwater Orchards is located next to the Sacramento River in the town of **Courtland**— an area known to produce some of the best pears in the world. We are pleased to offer the following varieties:

- **Delta Bartlett**— Sweet and juicy with buttery flesh. Their flavor and smooth texture make Bartlett pears a **great addition to salads, pizzas, jams, pies and galettes**, or simply add to a cheese board. 40# case, piece, or pound.
- **Red Star Crimson**— Similar to a Bartlett but with beautiful red skin. 20# case, piece, or pound.
- **Bosc**— Great for a variety of applications. A ripe Bosc will still be firm and dense with **tender, sweet honey flesh** that is rich and aromatic. 40# case, pound, or piece.
- **Comice**— One of the **sweetest and juiciest varieties** with creamy flesh and an aroma reminiscent of wine. 20# case.
- **French Butter**— Juicy, buttery flesh with hints of lemon; a **great baking pear**. 20# case only.
- **Seckel**— Unfortunately, Stillwater did not have much of a Seckel harvest this year and have already sold out. These will not be available until next year.

## LOCAL WATERCRESS



We are proud to introduce local Hydroponic Watercress from **Aldon's Leafy Greens**, in **Fair Oaks, CA**. Its **unique peppery taste** makes watercress a wonderful addition to salads, paired with meats or fish, pureed into soups and sauces, or sprinkled on a sandwich or pizza. Sold by the 1# bag.



## APPLE HILL APPLES

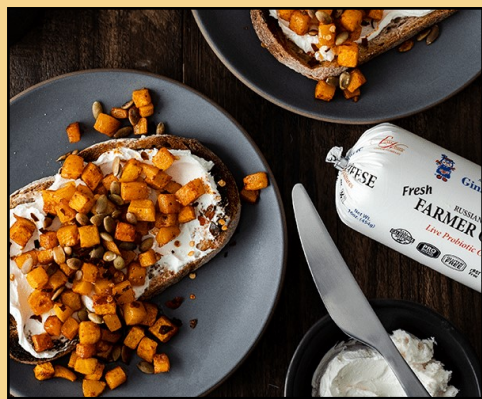
The first varieties of local apples have arrived! Our local apples come from **Larsen Apple Barn in Camino, CA**— a region nicknamed Apple Hill and known for its rich soil and crisp mountain climate. Larsen Apple Barn was **founded in the 1860's** by the Larsen family and continues to be the oldest, continuously family-owned farm in Apple Hill. We are pleased to offer the following with **more varieties to follow as the season progresses**:

- **Gala**— Red skin over a pale yellow background and creamy flesh that is yellow and crisp. Galas are mildly sweet in flavor and are **best for salads, eating raw, or used for applesauce**; not the best for baking. Available in a 10# case or 40# case.
- **Ruby Jon**— Great for applesauce! The skin is blushed solid red and when allowed to mature before picking the color will approach that of an Arkansas Black. Creamy white flesh and crisp. A versatile apple that is great for baking into tarts or pies. Available in a 40# case only.
- **Ruby Mac**— A member of the Macintosh family, this apple has a dark red skin that is dull with a dusty bloom that shines up nicely. This is a firm apple with finely textured flesh that is crisp and quite juicy. The flavor is balanced with hints of raspberry and spice. A versatile apple that is great for raw and cooked applications. Available in a 40# case only.

**"Farm to you overnight"**



# SIERRA NEVADA CHEESE



Sierra Nevada Cheese Company was **founded in 1997** by Ben Gregersen and John Dundon. In 2003, Sierra Nevada Cheese Co. moved their creamery to a bigger facility in **Willows, just north of Sacramento**. Ben and John are both hands-on owners and operators of Sierra Nevada Cheese Co. They remain committed to providing the highest quality product using only the most **wholesome milk, free of added hormones, preservatives, stabilizers, gums, and nothing artificial, just great cheese**. We proudly offer the following:

**Goat Feta** (5# loaf)- Brine-cured cheese that is semi-firm, compact and less salty than most European versions.

**Capra Bianca Aged Goat Cheddar** (5# loaf)- Aged for over 6 months, this semi-soft cheese offers a cheddar like quality with creamy smooth texture and a complex nutty flavor; excellent for a cheese board.

**Organic Farmhouse White Cheddar** (2/5# case)- Mild yet has a full-bodied, authentic flavor, and a creamy, buttery texture; an excellent melting cheese.

**Organic Smokehouse Jack** (3# wheel)- Ultra-creamy texture and great for adding a smoky, bacon-like flavor to your sandwich, burger, mac n cheese or vegetarian dish.

**Habanero Jack** (5# block)- Bold and spicy yet smooth and creamy with a lingering kick. Great for burgers, mac-n-cheese, sandwiches, and pizzas.

**Hatch Chile Jack** (5# block)- Ultra creamy and smooth texture that melts beautifully with a pleasantly mild taste. Full of flavor without the spice! This is a great cheese for chile con queso, chile rellenos, sandwiches, burgers, and more.

**Goat Cheese/Chevre** (2.2# log)- Smooth texture, fresh flavor, and a tangy, citrus finish. Use in salads, spread on crostini, great for cheese boards and more.

**Gina Marie Cream Cheese** (2.5# chub)- Made with fresh milk, cream and sea salt. Light, fluffy texture and fresh creamy flavor.

**Farmer's Cheese** (10/1# chubs)- A versatile Russian-style farmers cheese, similar to cream cheese but with a distinct tanginess from live probiotics. Excellent for lasagna, filled pasta, cheesecakes, or as a spread on toast or bagels.

**Organic Euro-Style Butter** (30/1# chubs)- High butterfat content creates an ultra rich, creamy flavor. It is vat-cured with live active cultures in a time-activated process to develop a distinctive all-natural flavor. **Available salted or unsalted.**

# ORDERING INFO

## Del Rio Botanicals- Limited Availability

Squash Blossoms- 35ct case  
Baby Mixed Squash- 10# case  
Finger Lime- 1/2 pint

## J&J Ramos Farms

Yellow and White Peaches- 18# case/#  
White and Yellow Nectarines- 18# case/#  
Plums and Pluots 18# case/#

## Dwelley Farms

Blue Lake Beans- 30# cs/#  
Romano Beans- 10# cs/#  
Yellow Wax Beans- 10# cs/#  
Cranberry Beans- 15# cs  
White and Yellow Corn- 48 ears or each  
Sunburst Squash- 22# case  
Summer Squash- 22# case  
Ronde Nice Squash- 22# case  
Gold Bar Squash- 22# case/#  
Toybox Squash- 22# case



## Riverdog Farm

Nantes Carrots- 24 bunch  
Sungold Cherry Tomatoes- 12 pint  
Yellow Finn Potatoes- 25# case  
French Fingerling Potatoes- 25# case  
Gypsy Peppers- 10# case  
Padron Peppers- 5# case  
Jimmy Nardello- 5# case  
Rosa Bianca Eggplant- 10# cs  
Mixed Medley Cherry Tomatoes- 12pint flat  
German Butterball Potatoes- 25# case  
Mixed Medley Tomatoes- 12 Pint  
Red Slicing Tomato- 20# case



## Durst Organic Growers

Mixed Medley Cherry Tomatoes- 12 pint flat



## Vierra Farm

Seedless Watermelon- ea  
Black Watermelon- ea  
Yellow Corn- 48ct or ea



## R. Kelley Farm

Finished for the Season!

## Windmill Vineyard

Black Mission Fig- GAPPING  
Kadota Fig- GAPPING  
Tiger Stripe Fig-GAPPING  
Violette de Bordeaux Fig- GAPPING  
Toybox Fig- GAPPING



## Buy Local, Buy Fresh, Buy the Best!

PRODUCEPLUS.NET • (530)581-1525

