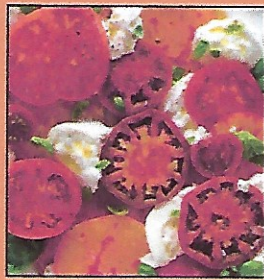
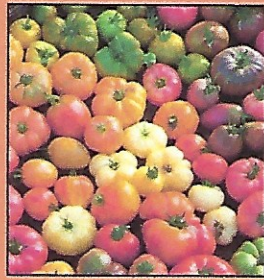


LOCAL FARMS



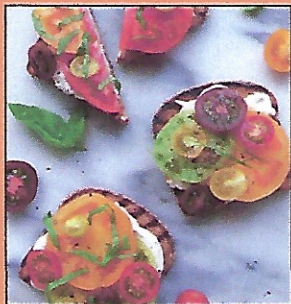
LOCAL HEIRLOOM TOMATOES

Ray Yeung tomatoes are **highly praised by local chefs for their intense flavor, unique sizes, shapes, and colors.** Yeung Farm is owned by "Uncle" Ray Yeung and his family. Their 60+ acre farm was established in 1950 in **West Sacramento**. Ray's tomatoes are 'open-pollinated' and are able to reproduce itself from seed. By definition, an heirloom tomato must have been introduced more than 50 years ago and have a history of its own- for example, the origin of the popular Brandywine tomato is credited to the Pennsylvania Amish community and is named for a local river. Yeung Farm grows **over two dozen varieties** during the season, which usually runs from now through October. We are currently offering the following in 10# single layer cases:

- **Black Pineapple**- Bright green flesh with deep red streaks; its flavor is both sweet and smoky with a hint of citrus.
- **Black Prince**- Known for its rich, sweet flavor and juiciness; very deep red skin with red/brown flesh.
- **Black Zebra**- Beautiful mahogany flesh with purple/mahogany skin with deep green streaks. Its flavor is rich and complex with hints of smoke and sweetness.
- **Carolina Gold**- Beautiful gold/orange skin and flesh, sweeter than red varieties.
- **Green Zebra**- Striped green/yellow skin with juicy green flesh, more tart flavor than other tomatoes.
- **Pineapple**- A large, golden-orange beef-steak heirloom tomato often with red stripes and a luscious, very rich, sweet pineapple like flavor.
- **Pink Brandywine**- Lovely pinkish red skin and flesh with a distinctive rich flavor. Tends to be on the larger side.
- **Purple Cherokee**- Deep red/purple skin with dark green shoulders, more acidic than sweet.
- **Black Crimson**
- **Black Trifele**
- **Red Zebra**
- **Striped Cavern**
- **Mixed Toybox**
- **True Vine Ripe Round Tomatoes**- Shady Lady tomatoes, 5X5 size. Sold by the 20# case only.

Please keep in mind that varieties in stock change based on availability. If you are looking for a specific variety, please contact our office.

"Farm to you overnight"



Del Rio Botanical (organic)

- Avocado Leaves-40ct cs
- Fava Beans and Greens- *DONE*
- Pea Tendrils- 2# case*
- Mizuna-4# case
- Arugula-4# case
- Braising Mix-4# case
- Red Frisee-2# case
- Lavender-1# case
- Boysenberries- *DONE*
- Black Mission Figs- *GAPPING*
- Squash Blossoms- 35ct clam
- Baby Mixed Squash- 10# case



Riverdog Farm (organic)

- White Spring Onion-*DONE*
- Red Spring Onion-10# case
- Tokyo Turnip-*GAPPING*
- Scarlet Queen Turnip- 10# case
- Armenian Cucumber- 10# case
- Bloomsdale Spinach-*GAPPING*



J&J Ramos

- Peaches- 18# case/lb
- Nectarines- 18# case/lb
- Plums- 25# case/lb



Wild River Farm

- Kiwi-36ct or volume filled (108ct) case
- Tropikiwi (golden)- 12.5# case

Full Belly

- Bintje Potatoes- 25# cs
- German Butterballs- *GAPPING*
- Desiree Potatoes- 25# cs
- Mountain Rose- 25# cs
- Orchid Melon- 5/6ct case only



Produce Alive (hydroponic)

- Watercress-1# bag
- Wasabi Arugula-8oz Bag

Twin Peaks Orchard

- Peaches-18# cs/lb
- Nectarines- 18# cs/lb



Dwelley Farm

- Toybox Squash- 22#cs
- Sweet Corn- 48ct cs/ea
- Blue Lakes- 30# cs/lb
- Yellow Wax- 10# cs/lb
- Romano Beans- 10#cs/lb
- Cranberry Beans- 15#cs

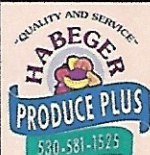


Maciel Farm

- Italian Squash- *GAPPING*
- Yellow Squash- *GAPPING*

R. Kelly Farms

- Shishito Peppers-5# case
- Gypsy Peppers- 10# case



BUY LOCAL, BUY FRESH, BUY THE BEST

PRODUCEPLUS.NET • (530)581-1525

